

# Rabbit Anti-SARS-CoV-2 (2019-nCoV) Nucleocapsid protein Monoclonal Antibody

Cat. No.      bsm-41511R

## Description

Size	100ug
Concentration	> 1mg/ml
Host	Rabbit
Target Protein	SARS-CoV-2 (2019-nCoV) Nucleocapsid protein
IR	Immunogen Range: 1-419/419
Clonality	Monoclonal
Clone No.	
Isotype	IgG
Entrez Gene	43740575
Swiss Prot	P0DTC9
Source	Recombinant SARS-CoV-2 Nucleocapsid Protein:1-419/419
Purification	Affinity purified by Protein A
Applications	ELISA(1:5000-20000)
Cross Reactive Species	SARS-CoV-2

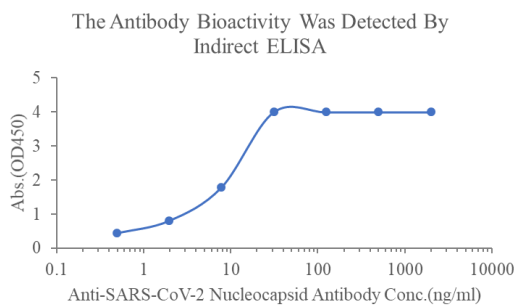
## Storage

0.01M PBS(pH7.4) with 0.03% Proclin300.  
Shipped at 4°C. Store at -20 ° C for one year. Avoid repeated freeze/thaw cycles.

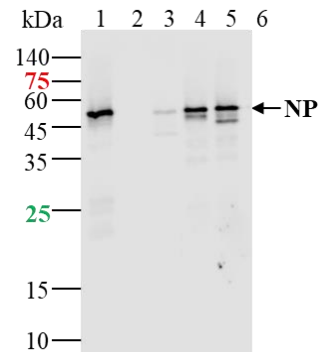
## Background

Nucleocapsid protein is a most abundant protein of coronavirus. During virion assembly, N protein binds to viral RNA and leads to formation of the helical nucleocapsid. Nucleocapsid protein is a highly immunogenic phosphoprotein also implicated in viral genome replication and in modulating cell signaling pathways. Because of the conservation of N protein sequence and its strong immunogenicity, the N protein of coronavirus is chosen as a diagnostic tool.

## Assay Data



Measured by its binding ability in a functional ELISA. Immobilized SARS-CoV-2 NP (bs-41417P) at 2µg/mL (100µL/well) can bind anti-SARS-CoV-2 NP monoclonal antibody, the EC50 for this effect is 7.8-15ng/ml.



Lane 1: SARS-CoV N protein(WT) at 10ng; Lane 2: SARS-CoV N protein(Q9H, P67S, P80R, P151L, S183Y) at 2ng; Lane 3: SARS-CoV N protein (D3L, P13T, D103Y, D128Y, H145Y, R203K, G204R, T205I, S235F) at 2ng; Lane 4: SARS-CoV N protein (Del204 & Del215) at 2ng; Lane 5: SARS-CoV N protein (R203M & D377Y) at 2ng probed with anti-SARS-CoV-2 N protein monoclonal antibody, Unconjugated (bsm-41511R) at 1:1000 dilution and 4°C overnight incubation. Followed by conjugated secondary antibody incubation at 1:20000 for 60min at 37 °C